

Servo-Control valve HVM 065

- Robust and compact design
- USB interface for customer parameterized
- High power reserve of the Linear motor
- Reduced dirty oil sensitive
- $Q_{max} = 40 \text{ l/min}$ at $\Delta p = 70 \text{ bar}$
- $p_{max} = 315 \text{ bar}$
- Hydraulic and electric zero adjustment
- Emergency movement without electrical power possible
- Maximum energy efficiency by minimized leakage design

Servomotion

new



Jos. Schneider Optische Werke GmbH
Ringstr. 132 • 55543 Bad Kreuznach • Germany
Geschäftsbereich Servohydraulik
fon.: ++49 (0)671 – 601 278
fax: ++49 (0)671 – 601 327
hydraulik@schneiderkreuznach.com
www.servo-hydraulik.de

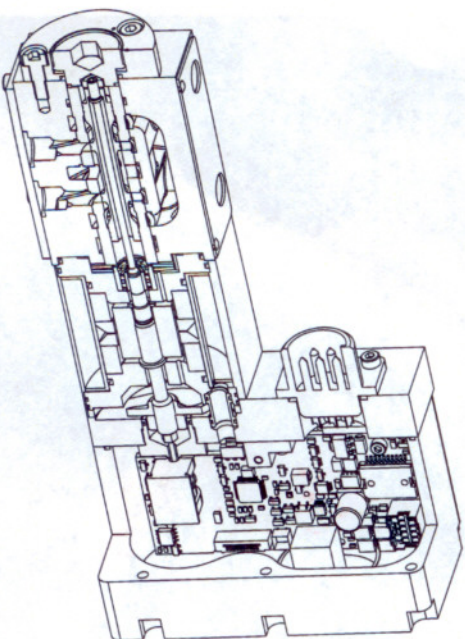
Servo - Control valve HVM 065

Compact Electro-hydraulic 4 / 3 way proportional Valve with linear flow characteristic and position feedback of spool actual value. The single-stage design in size 6 with powerful linear motor and onboard digital electronics is ideal for demanding hydraulic control tasks.

The high reserve force of the newly-developed linear motor on the one related to the digital electronics for the integrated position control loop of the control piston are providing excellent dynamic and static characteristics achieved and the other is still sufficiently good resolution at lower cleanliness levels of the oil reached. The reliable, low leakage, single slide / sleeve construction ensures maximum energy efficiency.

Through a protected, USB interface the Servo - control valve is custom configured with a standard PC or laptop. The digital electronics allows a perfect setting once found reproducibly to be transferred to other systems.

Cutaway



Technical Data

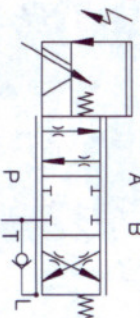
Hydraulic Data

- Operating pressure
- Return pressure max.
- Rated flow Q_N 70 bar
- Zero flow
- Hysteresis
- Threshold sensitivity
- Threshold span
- Linearity deviation
- Pressure gain
- Overlap standard
- Step response time
- Operating temperature range
- Temperature drift
- Viscosity range of fluid
- Fluid standard
- Filtration (recommended)

Electrical data

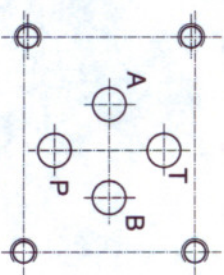
- Electrical connection
- Power supply
- Signal input: voltage current
- Signal direction
- Flow direction
- Protection level
- EMV
- Service connection

Symbol

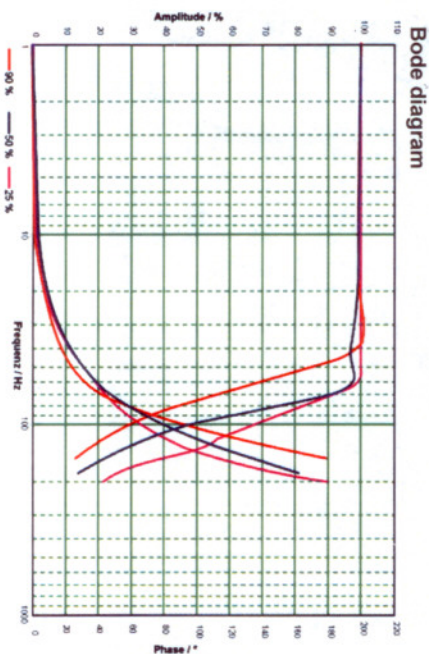
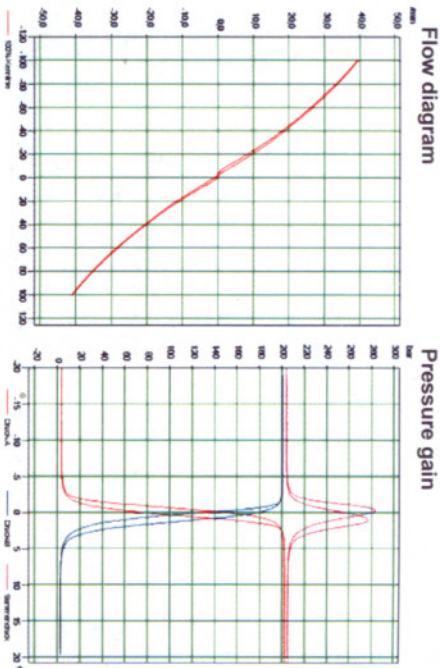


Size

ISO 4401 size 03
DIN 24340 NG6



Diagram



Applications:

- Automotive
- Testing
- Plastic and rubber
- Dosing technology
- Sheet processing
- Maschine tools
- Pilot systems
- Adhesive application systems
- Energy / Windpower
- Low pressure hydraulic

All rights reserved Copyright
The reproduction, distribution and utilization of this document or parts thereof in any form whatsoever without written authorization is prohibited.
We do not assume liability for any printing or technical editorial errors. We reserve the right to change or update technical specifications at any time and without prior notice.